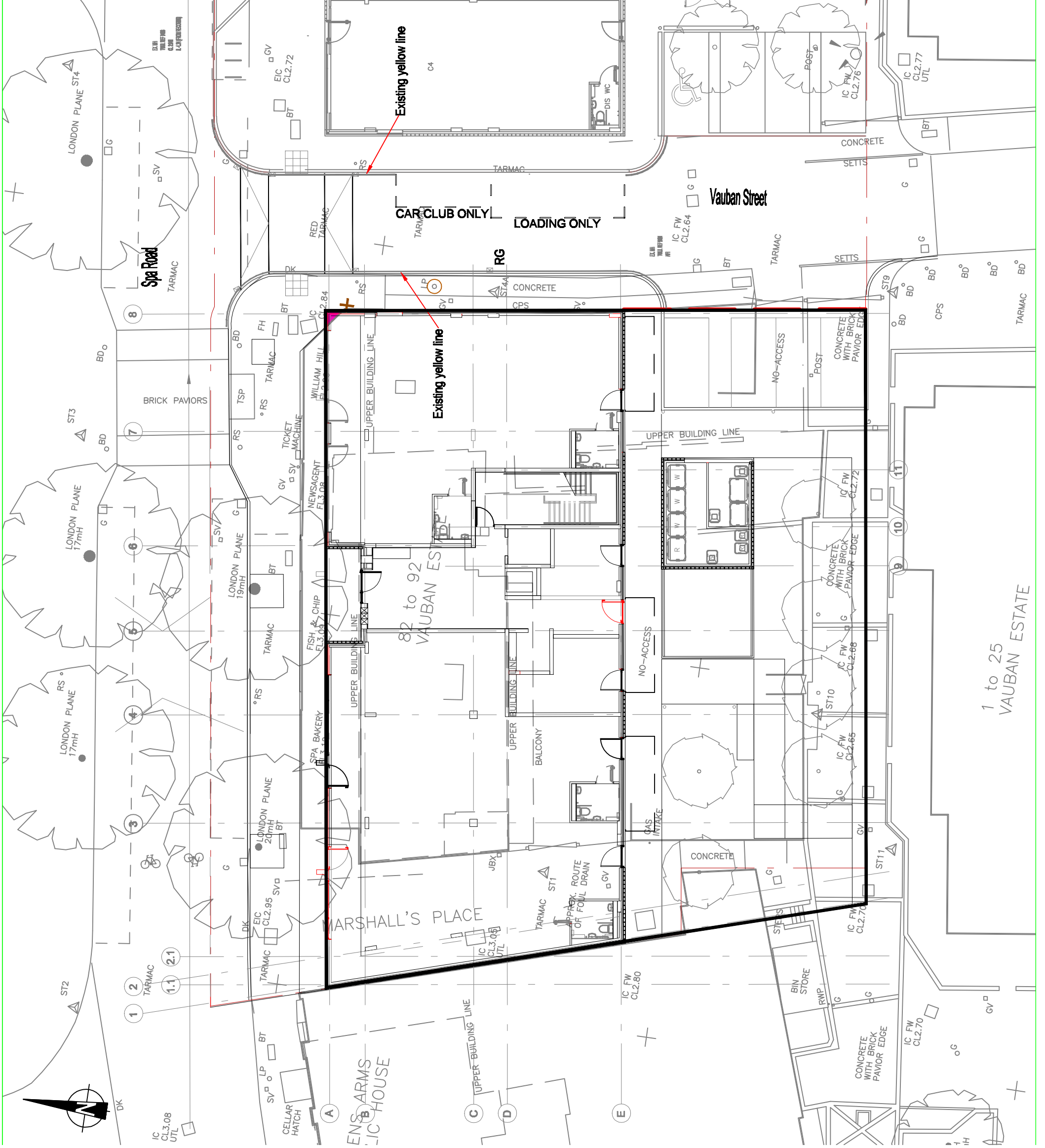


NOTES

1. THE TOPOGRAPHICAL SURVEY WAS CARRIED OUT BY EN SURVEYS LTD. IN SEPTEMBER 2007 (JOB NO. 46807).

KEY



Mark	Revision	Drawn	Date	Chief
P6	AMENDED TO SUIT LB SOUTHWARKS COMMENTS.	TAJP	01.04.14	PJD
P5	AMENDED TO SUIT LB SOUTHWARKS COMMENTS.	TAJP	31.03.14	PJD
P4	AMENDED TO SUIT LB SOUTHWARKS COMMENTS.	TAJP	24.03.14	PJD
P3	AMENDED TO SUIT LB SOUTHWARKS COMMENTS.	TAJP	21.03.14	PJD
P2	DETAILS AMENDED TO SUIT LBS'S COMMENTS. ISSUED FOR APPROVAL	TAJP	17.03.14	PJD
P1	ISSUED FOR APPROVAL	TAJP	03.03.14	PJD

SCALING NOTE: Do not scale from this drawing. If in doubt, ask.
UTILITIES NOTE: The position of any existing public or private sewers, utility services, plant or apparatus shown on this drawing is believed to be correct, but no warranty is made as to its accuracy or depth. Check each point or apparatus may also be present but not shown. The Contractor is therefore advised to undertake his own investigation where the presence of any existing sewers, services, plant or apparatus may affect the operations.

Drawing Issue Status

PRELIMINARY

**BERMONDSEY SPA, LONDON
 BLOCK G - PHASE 2
 S278 AGREEMENT EXTENT**

Client	ROOFF LTD
Architect	WESTON WILLIAMSON
Date of set issue	26.02.14
Drawn by	1/200
Checked by	PJD
A3 Scale	1/200
Drawing Number	27487/C/10
Revision	P6

